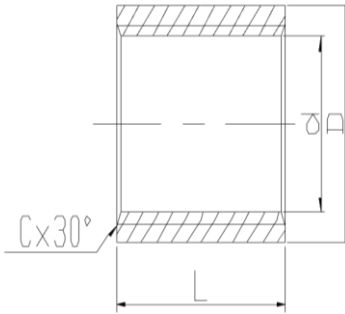


Steel Merchant & API Line Couplings

Specification Sheet

FEATURES & BENEFITS

- Meets or exceeds all applicable ASTM, ANSI and API standards
- Merchant Couplings stocked 1/8" - 6" diameters
- API Line Couplings stocked 1/8" - 8" diameters
- API Couplings have tapered threads per API 5B
- Full stock of specialty couplings, such as Half Couplings and Right and Left Couplings
- WOG (PSI) 300 at 150°F
- Saturated Steam Pressure 150 PSI



DIMENSIONS

Nom. Diam. in Inches	1/8"	1/4"	3/8"	1/2"	3/4"	1"	1-1/4"	1-1/2"	2"	2-1/2"	3"	4"	5"	6"	8"
Standard Merchant Coupling															
O.D. In.	0.563	0.721	0.876	1.064	1.314	1.577	1.901	2.202	2.752	3.251	4.003	5.004	6.300	7.395	-
Length In.	0.813	1.188	1.188	1.563	1.626	2.001	2.064	2.064	2.126	3.127	3.252	3.502	3.752	4.003	-
Half Coupling															
O.D. In.	0.563	0.721	0.876	1.064	1.314	1.577	1.901	2.202	2.752	3.251	4.003	5.004	6.300	7.395	-
Length In.	0.344	0.532	0.532	0.721	0.753	0.938	0.969	0.969	1.001	1.501	1.564	1.690	1.824	1.938	-
API Coupling															
O.D. In.	0.563	0.719	0.875	1.063	1.313	1.576	2.054	2.200	2.875	3.375	4.000	4.625	6.296	7.390	9.625
Length In.	1-1/16	1-5/8	1-5/8	2-1/8	2-1/8	2-5/8	2-3/4	2-3/4	2-7/8	4-1/8	4-1/4	4-1/2	4-5/8	4-7/8	5-1/4

